

# The Pittsburgh Promise

[www.pittsburghpromise.org](http://www.pittsburghpromise.org)

Students who

**LIVE**

In the City of Pittsburgh  
Since day 1 of 9<sup>th</sup> grade

# ATTEND

A Pittsburgh Public School or one of its  
Charter Schools  
Since day 1 of 9<sup>th</sup> grade

**GRADUATE WITH A MINIMUM:**

**90% + 2.50 =**

**ATTENDANCE**

**CUMULATIVE GPA**

**Promise Scholarship**

Applies to any accredited 2 or 4 year college,  
university, trade/technical school in the state of  
Pennsylvania

# THE CCAC EXTENSION PROGRAM FOR THE PROMISE

$$90\% + 2.0-2.49 =$$

Attendance

Cumulative GPA

**1 Year Extension Program at CCAC**

Includes support of Promise Success Coaches

$$18 + 2.0 =$$

Credits/Year

Min. Cumulative GPA

**Full Promise Eligibility**

**WHILE IN COLLEGE, SCHOLARS  
MUST MAINTAIN:**

**2.00 + 24 =**

**CUMULATIVE GPA    CREDITS/YEAR**

**Continued  
Promise Scholarship**

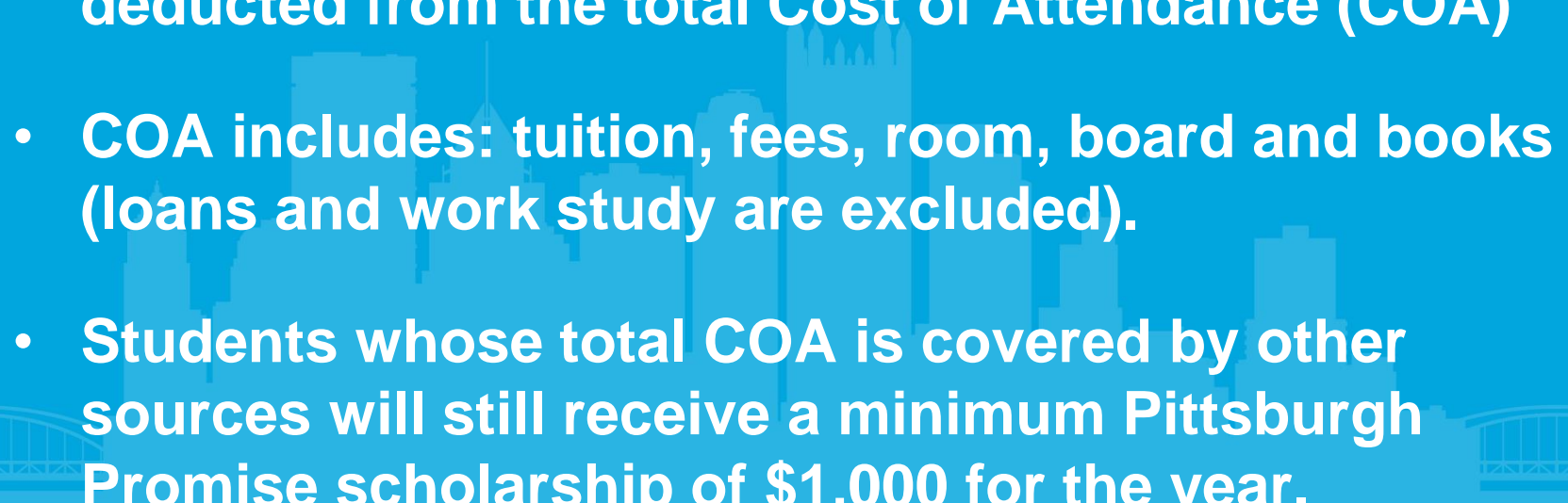


# The Scholarship

- ☐ 1) Live in the City or Wilkinsburg from day 1 of 9<sup>th</sup> grade continuously through graduation
  - ☐ 2) Attend PPS (or Charter) from day 1 of 9<sup>th</sup> grade continuously through graduation
  - ☐ 3) Meet GPA requirements (2.5 or higher)
  - ☐ 4) Meet attendance requirements (90% or higher)
- ✓ *Eligible for up to \$5,000 per year for four years of post-secondary education = \$20,000*



# What Does The Promise Pay For?

- The student's remaining balance after all other grants, scholarships and institutional aid has been deducted from the total Cost of Attendance (COA)
  - COA includes: tuition, fees, room, board and books (loans and work study are excluded).
  - Students whose total COA is covered by other sources will still receive a minimum Pittsburgh Promise scholarship of \$1,000 for the year.
- 





**Tuition and Fees**

**+ Room and Board**

**+ Books**

---

**= Total Cost of Attendance**

**— Pell Grant (from FAFSA)**

**— PHEAA (PA State Grant)**

**— All other grants+scholarships**

---

**= Unmet Need**

**— Promise Scholarship**

---

**= Remaining Balance**

**Aid**

**To Pay**



*Preferred College Partners*



# PREFERRED COLLEGE PARTNERS

1. Allegheny College
2. Cal. U of Pennsylvania
3. Carlow University
4. Carnegie Mellon University
5. Chatham University
6. Cheyney University
7. Clarion University
8. Duquesne University
9. Edinboro University
10. Geneva College
11. Grove City College
12. Indiana U of Pennsylvania
13. Juniata College
14. Kutztown University
15. La Roche College

16. Mansfield University
17. Mercyhurst University
18. Mount Aloysius College
19. Penn State- Select Campuses
20. Pittsburgh Technical College
21. Point Park University
22. Robert Morris University
23. Rosedale Technical College
24. Saint Vincent College
25. Seton Hill University
26. Shippensburg University
27. Slippery Rock University
28. Susquehanna University
29. Thaddeus Stevens College of Tech
30. Thiel College
31. Washington and Jefferson College
32. Waynesburg University
33. Westminster College
34. Williamson College of the Trades

# USE YOUR PROMISE DOLLARS EARLY

## CTE and Dual Enrollment Courses at CCAC

An advance on your Promise funds may be accessed while in 11<sup>th</sup> and 12<sup>th</sup> grades to take college courses

Students must meet residency and enrollment requirements to enroll

**A COMPLETE FAFSA IS  
REQUIRED EVERY YEAR AT**

**fafsa.gov**

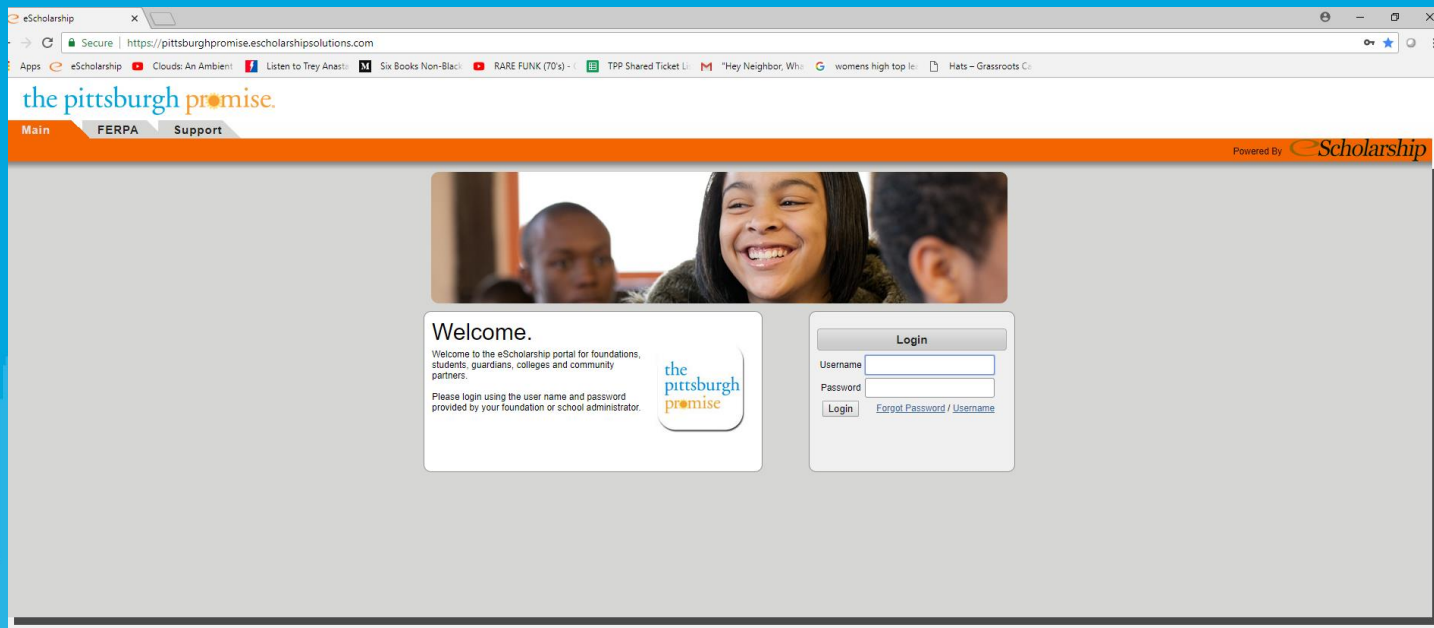
Make your FSA ID first at [www.fsaaid.ed.gov](http://www.fsaaid.ed.gov)

**Also the PA State Grant**

**pheaa.org**

**FAFSA is available OCTOBER 1<sup>st</sup>. Deadline is  
MAY 1<sup>st</sup> in order to receive both grants**

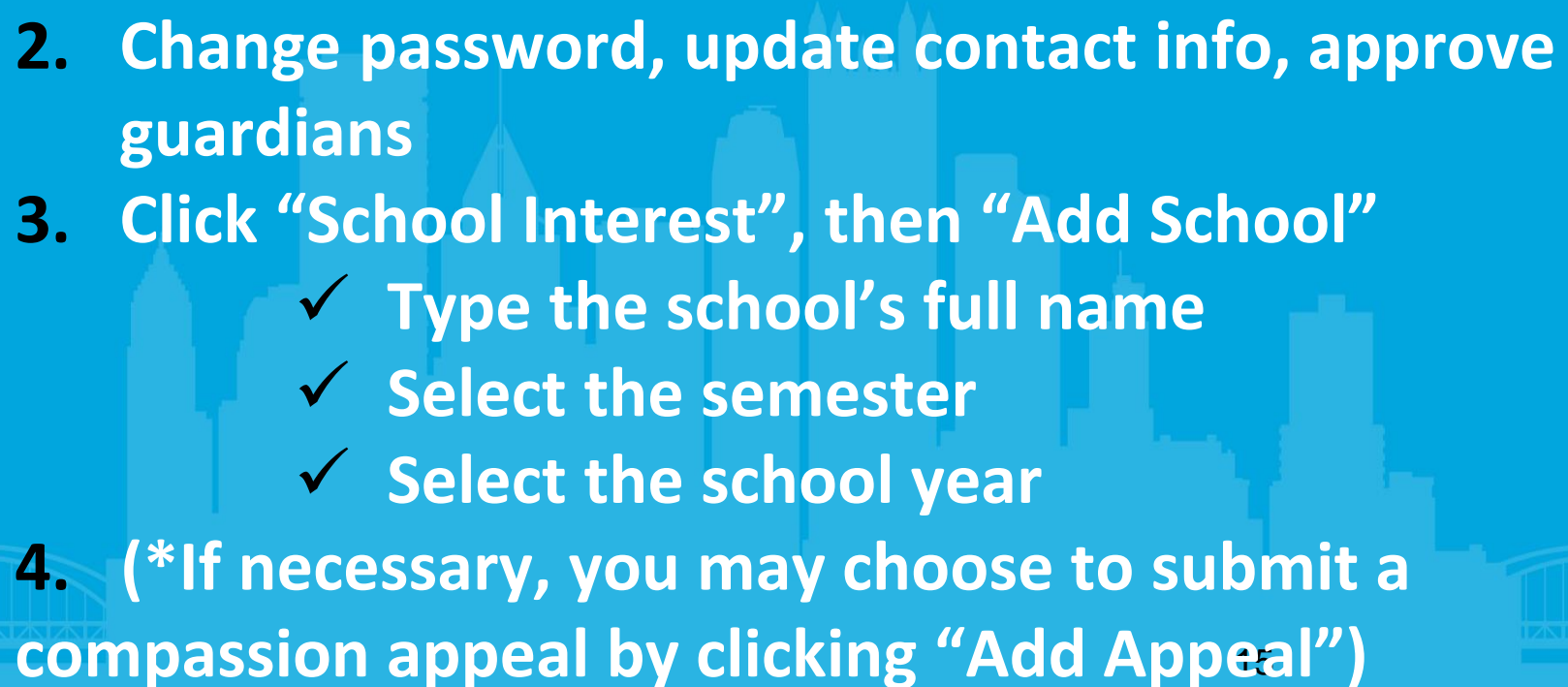
Seniors- to apply, visit  
[www.pittsburghpromise.org/portal](https://www.pittsburghpromise.org/portal)

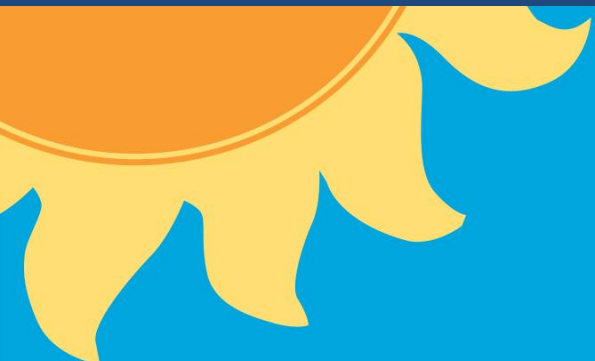




# 3 STEPS TO THE PROMISE APPLICATION

[www.pittsburghpromise.org/portal](http://www.pittsburghpromise.org/portal)

1. Login to Promise Student Portal
  2. Change password, update contact info, approve guardians
  3. Click “School Interest”, then “Add School”
    - ✓ Type the school’s full name
    - ✓ Select the semester
    - ✓ Select the school year
  4. (\*If necessary, you may choose to submit a compassion appeal by clicking “Add Appeal”)
- 



Q & A

QUESTIONS LATER?

CONTACT US AT:  
DANNY@PITTSBURGHPROMISE.ORG  
412-745-2224